



**Fischbach**  
LAND COMPANY

Fischbach Land Company  
510 Vonderburg Dr., Suite 208  
Brandon, FL 33511  
**813-540-1000**

***Riverfront Oasis Homesite 0.67 +/- Acres, Brandon, FL***  
***Secluded Lot with 250 +/- Feet of River Frontage on the Alafia River!***  
[FischbachLandCompany.com/RiverfrontOasis](http://FischbachLandCompany.com/RiverfrontOasis)

Reed Fischbach • 813-540-1000  
[reed@fischbachlandcompany.com](mailto:reed@fischbachlandcompany.com)

## Riverfront Oasis Homesite 0.67 +/- Acres, Brandon, FL

**Fischbach**  
LAND COMPANY

Stunning lot has 250 +/- feet of river frontage on the Alafia River! Located at the south end of John Moore Road, the property provides a convenient location with quick access to anywhere in Brandon and Tampa. Build your dream home and enjoy the spectacular views. Close to I-75, SR 60, and US 301.

### *Secluded Riverfront Lot on Private Dead-end Road*

**Property Type:** Homesite Lot, Vacant Land

**County:** Hillsborough

**Total Acreage:** 0.67 +/- acres

**Price:** \$149,000

**Property Location:** 4609 John Moore Road,  
Brandon, FL 33511

**Nearest Intersection:** Bloomingdale Avenue & John  
Moore Road

**Water Frontage:** 250 +/- feet on the Alafia River

**Road Frontage:** Private drive off of John Moore Road

**Uses:** Homesite

**Folio#:** 074832-0000

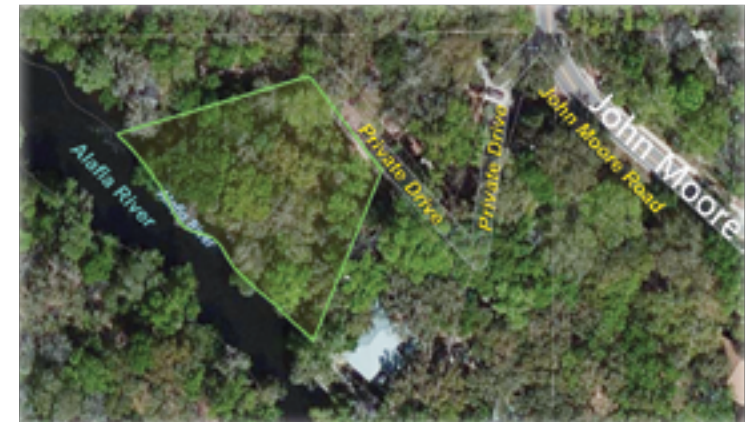
**Schools:**

- Cimino Elementary School
- Burns Middle School
- Bloomingdale High School

**Driving Directions:**

- From SR 60, turn South on Parsons Avenue  
(Parsons Avenue becomes John Moore Road)
- Turn right on Curry's Landing Trail
- Property is located on the left

*Build Your Dream Home!  
Wooded, Grandfather Oaks  
River Frontage on the Alafia River*



*Private, Secluded,  
Dream Homesite  
Accessed by Private Drive  
Convenient Location to Brandon and Tampa*

Fischbach Land Company  
510 Vonderburg Dr., Suite 208  
Brandon, FL 33511  
813-540-1000

[FischbachLandCompany.com/RiverfrontOasis](http://FischbachLandCompany.com/RiverfrontOasis)

Reed Fischbach • 813-540-1000  
[reed@fischbachlandcompany.com](mailto:reed@fischbachlandcompany.com)