

BRANTLEY RESERVE

A MINOR SUBDIVISION

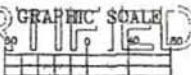
THIS IS NOT A CERTIFIED COPY
 A SUBDIVISION IN NORTHWEST 1/4 OF SECTION 19, TOWNSHIP 30 SOUTH, RANGE 22 EAST, HILLSBOROUGH COUNTY, FLORIDA
 (BASIS OF BEARINGS LINE)
 THOMPSON ROAD
 S89°54'21"E 2629.37'

HILLSBOROUGH COUNTY
 (FOUND) Northwest Corner
 of the Northeast 1/4 of
 Section 19, Township 30
 South, Range 22 East
 CCR #082227

BOUNDARY LINE TABLE

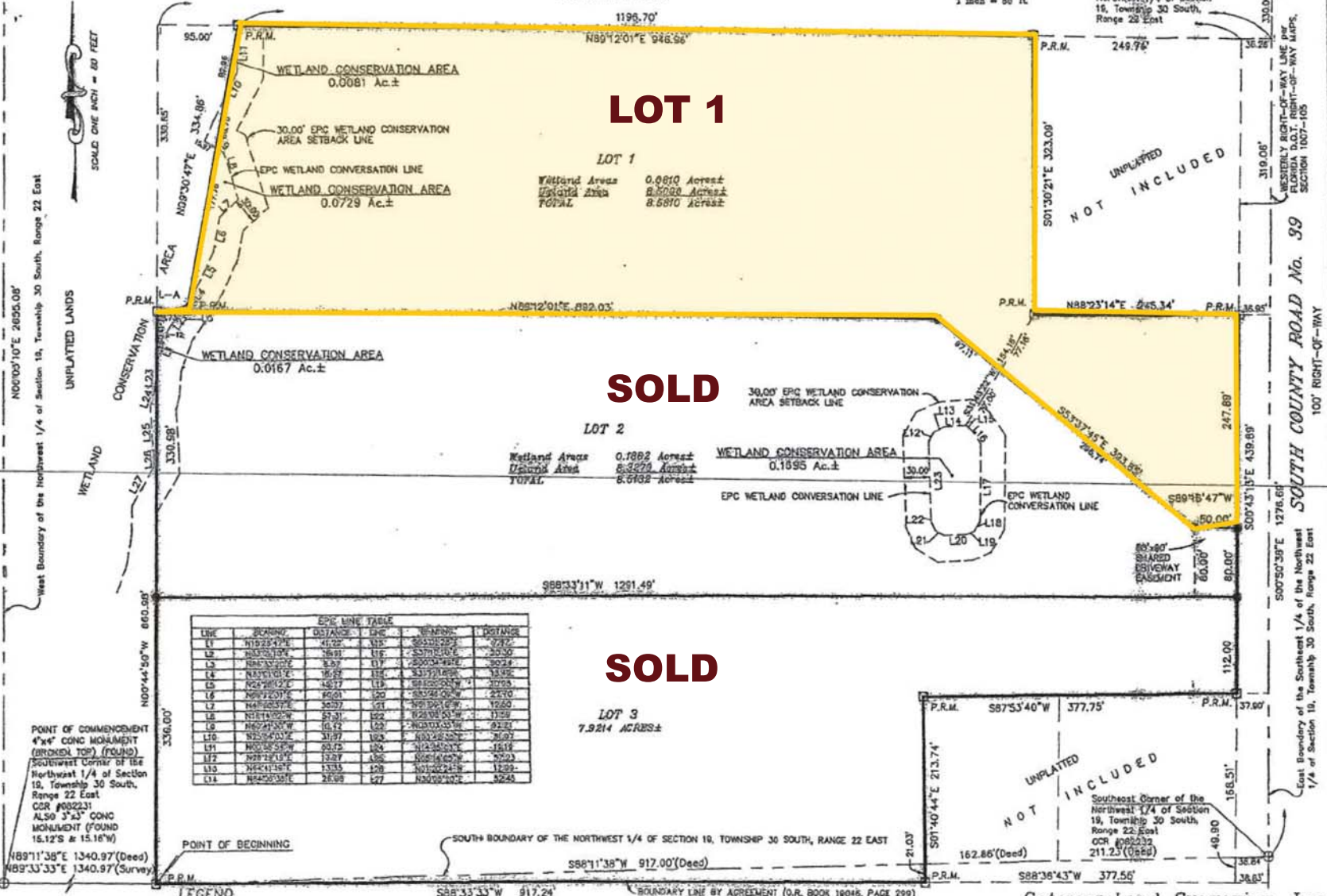
LINE	BEARING	DISTANCE
1-A	N89°53'29"E	36.39

UNPLATTED LANDS



Northeast Corner of the
 Northwest 1/4 of Section 19,
 Township 30 South, Range
 22 East (Found #087818)

Northeast Corner of the
 Southeast 1/4 of the
 Northwest 1/4 of Section
 16, Township 30 South,
 Range 22 East



LOT 1

Wetland Areas 0.0810 Acres±
 Unplatted Area 8.8088 Acres±
 TOTAL 8.890 Acres±

SOLD

LOT 2

Wetland Areas 0.7892 Acres±
 Unplatted Area 8.3279 Acres±
 TOTAL 9.1171 Acres±

SOLD

LOT 3
 7.9214 ACRES±

EPC LINE TABLE

LINE	BEARING	DISTANCE	EPC	BEARING	DISTANCE
L1	N10°22'47"E	41.02'	115'	S85°51'22"E	77.92'
L2	N33°02'19"E	16.91'	116'	S25°11'01"E	20.30'
L3	N85°33'22"E	8.39'	117'	S20°03'49"E	30.22'
L4	N41°10'11"E	16.25'	118'	S33°17'08"E	13.92'
L5	N24°28'12"E	14.57'	119'	S82°22'22"W	10.93'
L6	N89°12'23"E	66.01'	120'	S89°34'02"W	22.91'
L7	N48°23'27"E	34.07'	121'	N89°39'47"W	19.20'
L8	N81°11'00"W	27.31'	122'	N22°48'43"E	17.55'
L9	N82°47'31"W	10.42'	123'	S80°03'03"E	42.81'
L10	N25°34'02"E	31.87'	124'	S80°22'22"W	36.92'
L11	N00°58'35"W	60.72'	125'	N12°34'01"E	15.12'
L12	N89°21'08"E	13.87'	126'	N88°14'02"W	20.03'
L13	N44°11'50"E	13.55'	127'	N01°02'24"W	12.29'
L14	N84°25'38"E	25.99'	127'	N30°09'10"E	32.43'

POINT OF COMMENCEMENT
 4"x4" CONG MONUMENT
 (BRONZE TOP) (FOUND)
 Southwest Corner of the
 Northeast 1/4 of Section
 19, Township 30 South,
 Range 22 East
 CCR #082231
 ALSO 3"x3" CONG
 MONUMENT (FOUND)
 15.12'S & 15.16'W

POINT OF BEGINNING
 N89°11'38"E 1340.97'(Deed)
 N89°33'33"E 1340.97'(Survey)

LEGEND

- P.R.M. = SET 4" X 4" CONCRETE MONUMENT WITH BRASS CAP STAMPED: P.R.M. L.B. #7067
- P.R.M. = PERMANENT REFERENCE MONUMENT
- CCR = CERTIFIED CORNER RECORD
- SET 5/8" BY 18" CAPPED IRON ROD STAMPED: LB #7087
- LB = LICENSED BUSINESS
- EPC = ENVIRONMENTAL PROTECTION COMMISSION
- POC = POINT OF COMMENCEMENT

BOUNDARY LINE BY AGREEMENT (O.R. BOOK 18046, PAGE 299)
 (FINAL JUDGMENT RECORDED IN O.R. BOOK 19087, PAGE 1520)
BASIS OF BEARINGS
 BEARINGS AREA BASED ON THE NORTH BOUNDARY OF THE NORTHWEST 1/4 OF SECTION 19, TOWNSHIP 30 SOUTH, RANGE 22 EAST AS S109°08'36"E PER THE FLORIDA COORDINATE SYSTEM GRID AS ESTABLISHED FROM PN H AND PN L

UNPLATTED LANDS

Gateway Land Surveying, Inc.
 License# Business No. 7346
 1081 E. Brandon Blvd. Brandon, Florida 33511
 Phone (813) 643-2292 Fax (813) 643-2293
 SHEET 2 OF 2