

Fischbach LAND COMPANY



Fischbach Land Company
510 Vonderburg Dr., Suite 208
Brandon, FL 33511
813-540-1000
FischbachLandCompany.com

Bayview Drive Waterfront Estate, Ruskin, FL
3BR/3.5BA 2,065 HSF, 3-Story Key West Style Home on Little Manatee River!
Move-in Ready with Dock and Fully Furnished!
FischbachLandCompany.com/BayviewEstate

Reed Fischbach
reed@fischbachlandcompany.com
Melissa Raburn
melissa@fischbachlandcompany.com

Breathtaking Waterfront Home at the Mouth of The Little Manatee River!

This 3-story, Key West-style home exudes the charm, luxury, and relaxation that you desire in a waterfront home with convenient access to Tampa Bay's premier fishing and boating.

Thoughtfully designed so you can enjoy outside living year-around, you'll find a completely screened wrap-around porch offering panoramic views of the Little Manatee River and Tampa Bay.

On the 2nd level, you will find an exquisite, spacious kitchen with sprawling granite counters, solid wood cabinetry, an additional dry bar and stand-alone pot-filler. Large dining area is adjacent to the kitchen and showcases spectacular views out the two sets of French doors that surround it. The master suite is truly a

retreat with its built-in vanity, large jetted tub, and separate shower.

Designed to accommodate family, friends, or tenants, the 3rd level has two bedrooms and bathrooms each with their own exterior entrance and elevator access.

Ready and waiting to accommodate the avid fisherman, this sale also includes a covered boat dock with electric lift.

Every detail has been taken care of to fortify this home against Florida's extreme weather including impact windows and concrete pilings buried 30' into the ground. Being sold fully furnished, this serene escape is ready to be your gateway to life on the water!

Property Type: Recreation, Waterfront Home

County: Hillsborough

Acreage: 0.26 +/- acres

Price: \$1,050,000

Property Address: 814 Bayview Drive, Ruskin, FL 33570

Nearest Intersection: Bayview Drive and Canal Street

Road Frontage: 110 +/- feet on Bayview Drive

Water Access: Direct access on waterfront with boat dock out your door!

Water Views: Panoramic views of Little Manatee River and Tampa Bay

Water Frontage: 115 +/- feet

Water By: Well

Sewer By: Septic

Electric By: TECO

Zoning: RSC-9

Future Land Use: R-6

STR: 10-32-18

Folio/PIN: 031810-0000

Property Taxes: \$6,177

Property Uses: Waterfront home, recreational boating and fishing



Move-in Ready! Fully Furnished!

**Convenient Access to Tampa Bay's
Premier Fishing and Boating**



Site Improvements

- 2007 Single Family Home, 2,065 HSF, 3BR/3.5BA
- Elevator access to all 3 levels
- Covered boat dock with electric boat lift
- Bedrooms 2 & 3 are on level 3 – each with individual exterior access or access to elevator
- Wrap-around porch
- Impact windows

**Magnificent Panoramic Views of
The Little Manatee River and Tampa Bay!
Covered Boat Dock with Electric Lift**

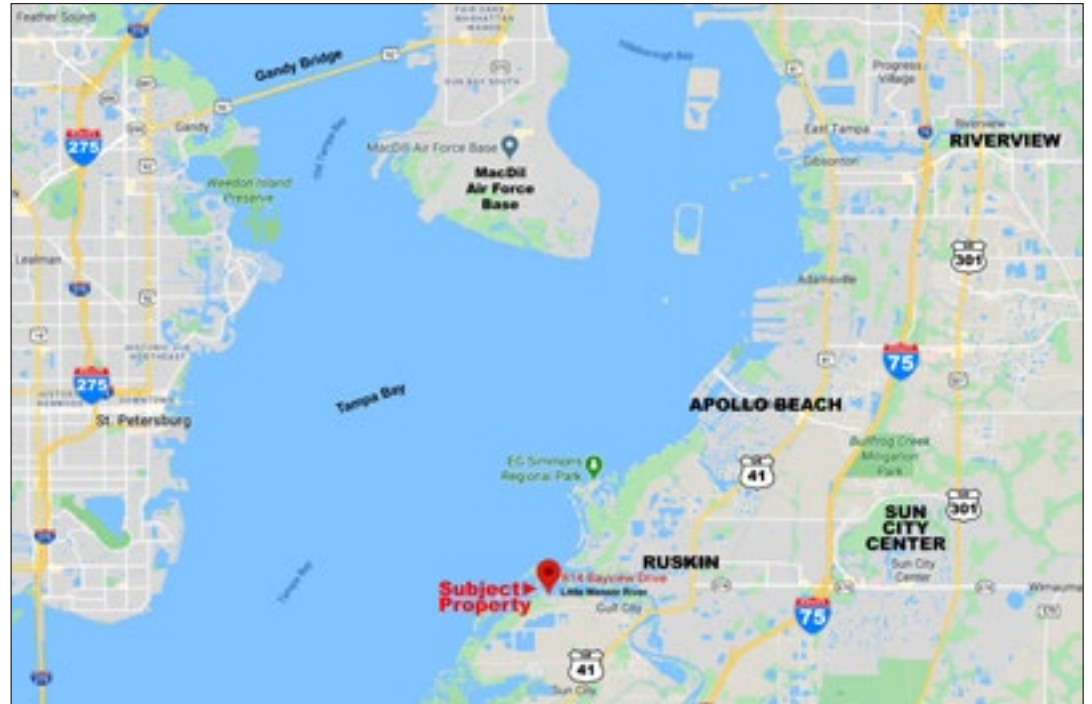
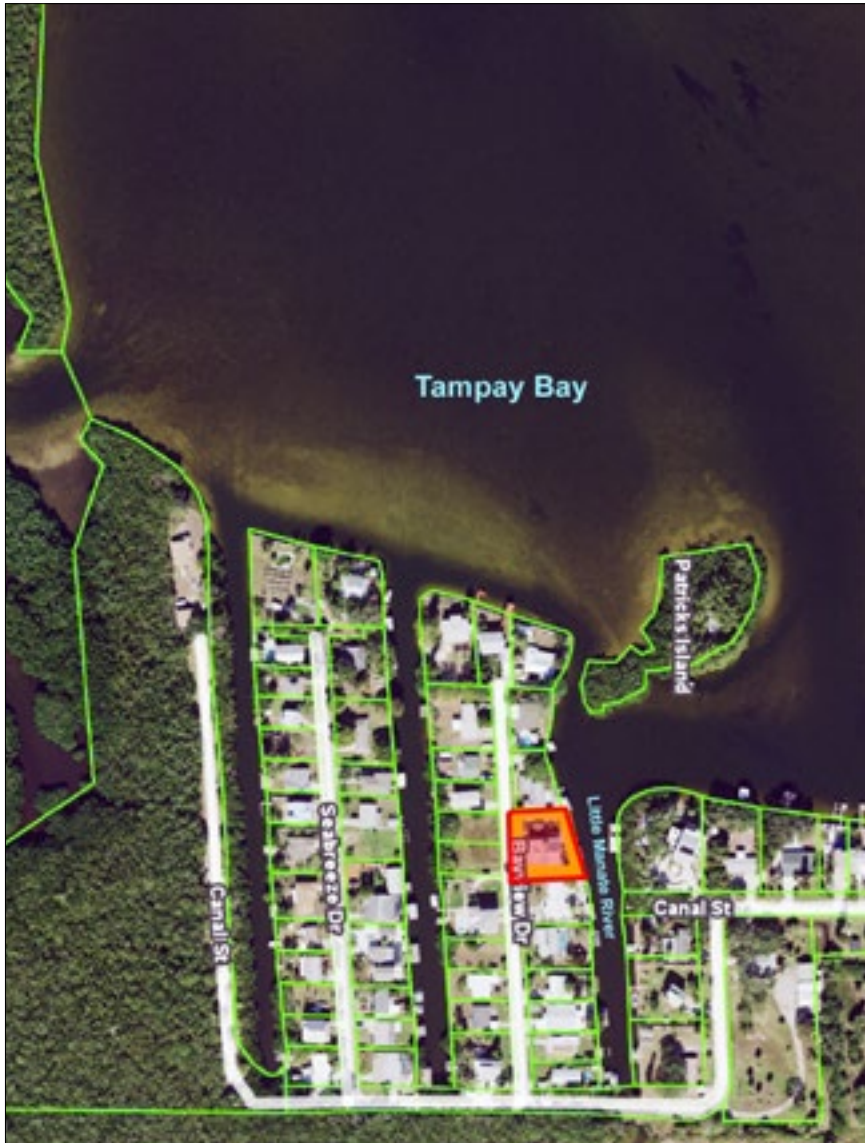












Driving Directions from Interstate 75:

- Take exit 240 for SR 674 West towards Ruskin (3.2 miles)
- Turn left onto US 41 (1.8 miles)
- Turn right onto Gulf City Road (2.0 miles)
- Bear right onto Canal Street (0.4 miles)
- Turn to the left to stay on Canal Street (0.1 miles)
- Turn right onto Bayview Drive (550ft)
- Arrive at destination

Assigned Schools:

- Ruskin Elementary School
- Shields Middle School
- Lennard High School