

Fischbach

LAND COMPANY



Fischbach Land Company
510 Vonderburg Dr., Suite 208
Brandon, FL 33511
813-540-1000

Gore Road Home on 5 +/- Acres, Dover, FL
Single Family Home 2,080 SFH, 3BR/2BA, Use as Office or Private Residence!

FischbachLandCompany.com/DoverHome

Reed Fischbach
reed@fischbachlandcompany.com
Melissa Raburn
melissa@fischbachlandcompany.com

Winding, tree-lined driveway leads you over a flowing creek and back to this private residence. Whether utilized as a single-family home or business office, the scenery here boasts beautiful views of mature landscaping, towering trees, and a private pond. The 3 BR/2 BA home is move-in ready and features a front porch and back patio for you to enjoy the great outdoors. The open floor plan, French doors and ample natural lighting make this home warm and inviting. When at the property, you will hardly believe this great escape is less than half a mile from I-4 and ideally situated for convenient access from all directions.

Property Type: Acreage Homesite, Homes with Acreage, Office

Sale Price: \$309,990

Size/Acreage: 5 +/- Acres

Property Address: 13058 Gore Road, Dover, Florida 33527

Nearest Intersection: McIntosh Road and Gore Road

Road Frontage: 140 +/- feet on Gore Road

Water On-site, View: Creek, pond

Soil Types: Myakka, Ona, and Winder Fine Sands

Water By: Well

Sewer By: Septic

Electric By: TECO

Zoning: AS-1

Future Land Use: R-1

STR: 19-28-21

Folio/PIN: 081626-0100

Property Taxes: \$4,572

Site Improvements: 1985 Single Family Home with 2,080 HSF, 3BR/2BA

Property Uses: Home with Acreage, Acreage Homesite, Business Office



***Impressive, Winding, Tree-lined Driveway
Utilize as Family Home or as a Business Office!***

***Beautiful Views of Mature Landscaping, Towering
Trees, Peaceful Creek, and a Private Pond!***

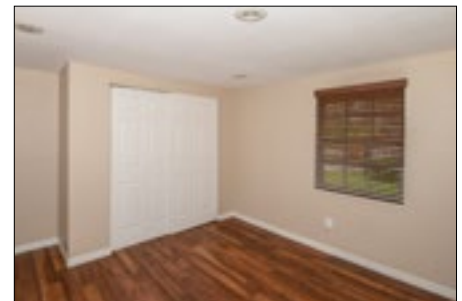
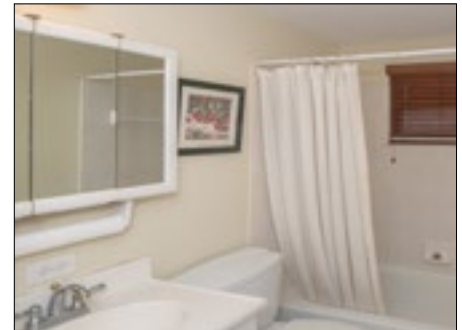


Single Family Home or Business Office

- Winding, tree-lined driveway
- Flowing peaceful creek
- Beautiful views of mature landscaping, towering trees, peaceful creek, and a private pond
- Irrigation System
- 3BR/2BA home
- Private residence or business office
- Move-in ready!
- Front porch and back patio
- Open floor plan
- French doors
- Fire Place
- Ceramic Tile
- Wood mini-blinds
- Lots of natural light
- Less than half a mile from I-4
- Ideally situated for convenient access from all directions!

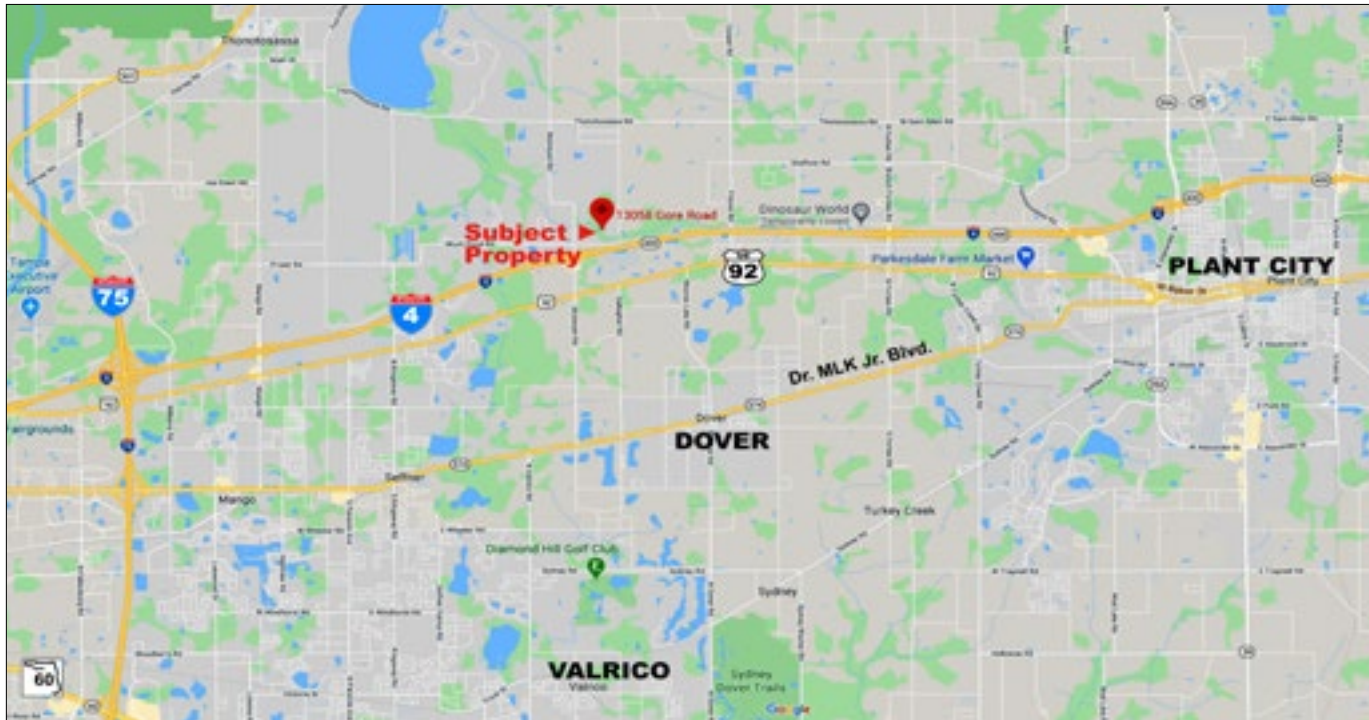










**Assigned Schools:**

- Bailey Elementary School
- Tomlin Middle School
- Strawberry Crest High School

Driving Directions from I-4:

- Take exit 14 and follow signs for McIntosh Road
- Head north onto McIntosh Road (0.2 mi)
- Turn right onto Gore Road (0.3 mi)
- Arrive at destination on the left

Centrally Located Close to Dover, Plant City and I-4; Near US 301 and I-75!
Less Than Half Mile From I-4
Ideally Situated for Convenient Access from all Directions!