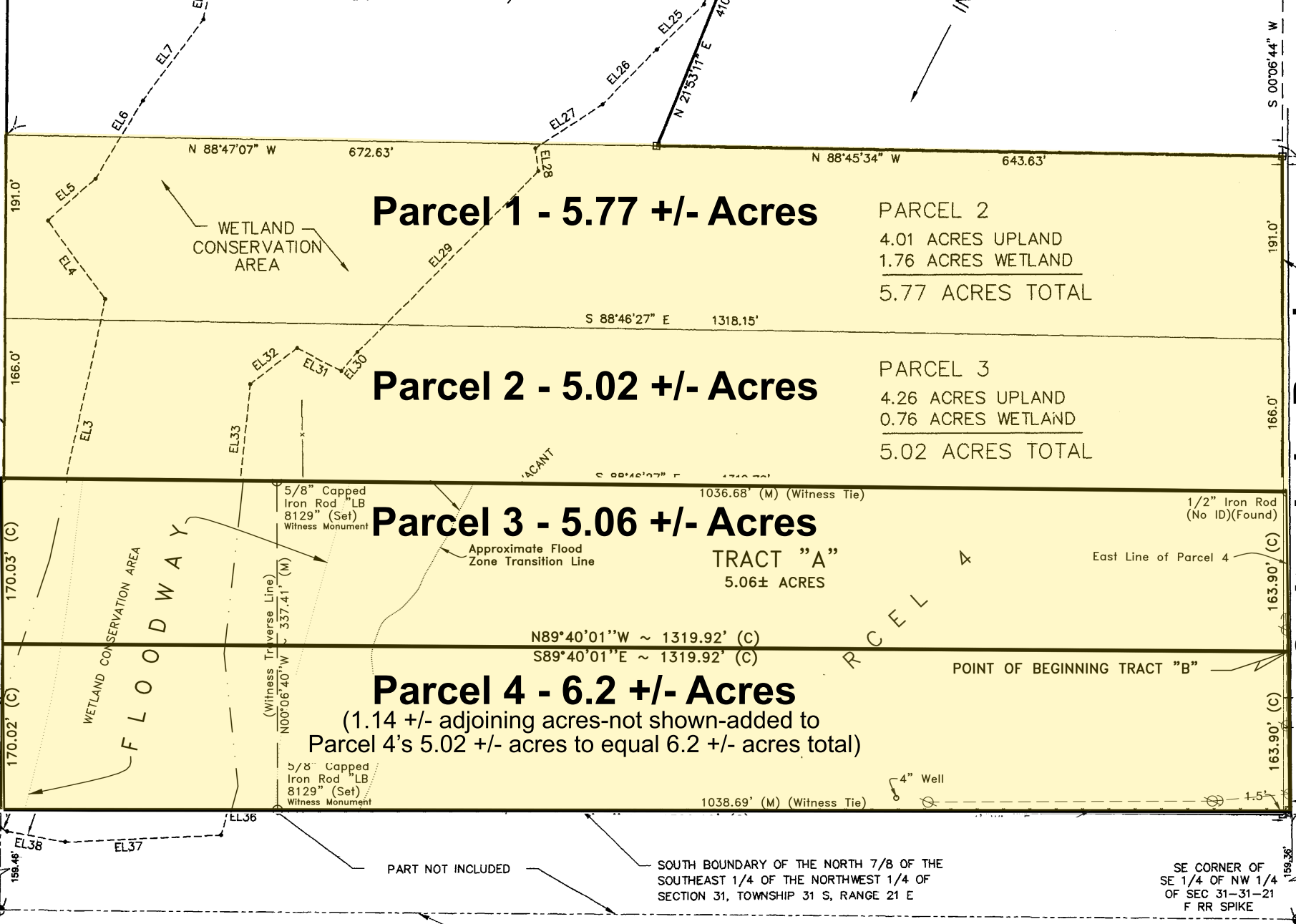


WEST BOUNDARY OF THE NORTH 7/8 OF THE  
SOUTHEAST 1/4 OF THE NORTHWEST 1/4 OF  
SECTION 31, TOWNSHIP 31 S, RANGE 21 E

S 00°27'16" W

SW CORNER OF  
SE 1/4 OF NW 1/4  
OF SEC 31-31-21  
F CM-#850



**Parcel 1 - 5.77 +/- Acres**

PARCEL 2  
4.01 ACRES UPLAND  
1.76 ACRES WETLAND  
5.77 ACRES TOTAL

**Parcel 2 - 5.02 +/- Acres**

PARCEL 3  
4.26 ACRES UPLAND  
0.76 ACRES WETLAND  
5.02 ACRES TOTAL

**Parcel 3 - 5.06 +/- Acres**

TRACT "A"  
5.06± ACRES

**Parcel 4 - 6.2 +/- Acres**

(1.14 +/- adjoining acres-not shown-added to  
Parcel 4's 5.02 +/- acres to equal 6.2 +/- acres total)

S 00°06'44" W  
1274.88'

15.35'  
5.40'

191.0'

166.0'

163.90' (C)

163.90' (C)

163.90' (C)

163.90' (C)

15.35'

156.36'

15.35'

15.35'



LESS FOR ROAD  
RIGHT-OF-WAY

**Carlton Lake Road**  
CARLTON LAKE ROAD  
20' ASPHALT PAVEMENT  
15.35' ONE-HALF R/W (MAINT)

1/2" Iron Rod  
(No ID)(Found)

4" Well

SE CORNER OF  
SE 1/4 OF NW 1/4  
OF SEC 31-31-21  
F RR SPIKE

PART NOT INCLUDED

SOUTH BOUNDARY OF THE NORTH 7/8 OF THE  
SOUTHEAST 1/4 OF THE NORTHWEST 1/4 OF  
SECTION 31, TOWNSHIP 31 S, RANGE 21 E

SOUTH BOUNDARY OF THE SE 1/4 OF  
THE NW 1/4 OF SECTION 31-31-21

WETLAND CONSERVATION AREA  
FLOODWAY

WETLAND  
CONSERVATION  
AREA

Approximate Flood  
Zone Transition Line

ACANT

PARCEL

POINT OF BEGINNING TRACT "B"

1036.68' (M) (Witness Tie)

5/8" Capped  
Iron Rod "LB  
8129" (Set)  
Witness Monument

(Witness Transverse Line)  
N00°06'40"W C 337.41' (M)

5/8" Capped  
Iron Rod "LB  
8129" (Set)  
Witness Monument

1038.69' (M) (Witness Tie)

N89°40'01"W ~ 1319.92' (C)

S89°40'01"E ~ 1319.92' (C)

N 88°47'07" W 672.63'

N 88°45'34" W 643.63'

S 88°46'27" E 1318.15'

EL4  
EL5  
EL6  
EL7

EL27  
EL28  
EL29

EL25  
EL26  
N 21°33'17" E 471.0'

EL32  
EL31  
EL30

EL3

EL33

170.03' (C)

170.02' (C)

170.02' (C)

1275.65'

191.0'

166.0'

191.0'

166.0'

163.90' (C)

163.90' (C)

163.90' (C)

15.35'

156.36'

15.35'