



**Fischbach**  
LAND COMPANY

**Hillsborough County Ranch & Retreat, 487 ± acres, Wimauma, FL**



Fischbach Land Company  
917 S. Parsons Avenue  
Brandon, Florida 33511  
813-540-1000

[FischbachLandCompany.com/HillsboroughRanch](https://www.FischbachLandCompany.com/HillsboroughRanch)

Reed Fischbach  
[reed@fischbachlandcompany.com](mailto:reed@fischbachlandcompany.com)  
Blaise Lelaulu  
[blaise@fischbachlandcompany.com](mailto:blaise@fischbachlandcompany.com)

# Hillsborough County Ranch & Retreat, Wimauma, FL

## One of the Last Large Contiguous Properties in Hillsborough County

This 487+/- acres is filled with lush improved pastures, scattered oaks, and a creek meandering through the property which flows from the Little Manatee River. The adjoining land consists of state, county, and large private ownership providing for eternal privacy.

This property features full perimeter fencing and interior pasture fencing, a 60'x 50' metal building, working cow pens, and power placed over a mile into the property serving an electric pump on a working well.

At just under an hour to Tampa International Airport and 20 minutes to the I-75 on ramp, this is a unique opportunity to have a picturesque gentleman's ranch in close proximity to amenities.

### Property Video

**Property Type:** Ranch, Agricultural land, Acreage Homesites, Recreational Property

**County:** Hillsborough

**Sale Price:** Soliciting Offers

**Acreage:** 487 ± Acres

**Property Address:** 8833 Flowers Road, Wimauma, FL 33598

**Nearest Intersection:** Flowers Road and Hobbs Road

**Road Frontage:** 50 ± FT on Flowers Road

**Water On-site:** Small cattle ponds, creek

**Water By:** Well on site

**Sewer By:** Septic required

**Electric By:** TECO

**Soil Types:** Predominately Ona, Felda, Myakka, Immokalee, Symrna fine sands

**Grass Types:** Bahia mix

**Fencing:** Perimeter cattle fencing

**Site Improvements:** 60'x 50' metal building, power poles, electric pump on well

**Zoning:** AR

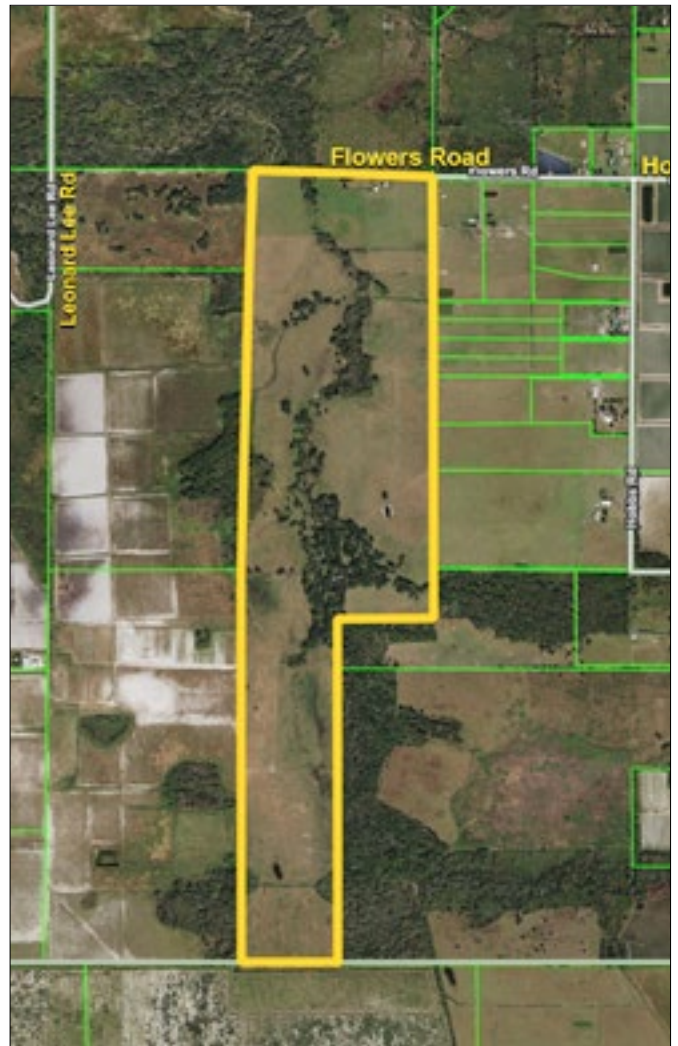
**Future Land Use:** AR

**STR:** 25-32-20

**Folio/PIN:** 079686-0000

**Property Taxes:** \$13,527.72 (2021)

**Property Uses:** Cattle, Hay, Recreation, Family compound



**Fully Perimeter Fenced, Interior Pasture Fencing, and Working Cow Pens  
This Property Features a 60' X 50' Metal Building and  
a Working Well with an Electric Pump.**

# Hillsborough County Ranch & Retreat, Wimauma, FL



Fischbach Land Company  
917 S. Parsons Avenue  
Brandon, Florida 33511  
**813-540-1000**

[FischbachLandCompany.com/HillsboroughRanch](https://www.FischbachLandCompany.com/HillsboroughRanch)

Reed Fischbach  
[reed@fischbachlandcompany.com](mailto:reed@fischbachlandcompany.com)  
Blaise Lelaulu  
[blaise@fischbachlandcompany.com](mailto:blaise@fischbachlandcompany.com)

# Hillsborough County Ranch & Retreat, Wimauma, FL



Fischbach Land Company  
917 S. Parsons Avenue  
Brandon, Florida 33511  
**813-540-1000**

[FischbachLandCompany.com/HillsboroughRanch](https://www.fischbachlandcompany.com/HillsboroughRanch)

Reed Fischbach  
[reed@fischbachlandcompany.com](mailto:reed@fischbachlandcompany.com)  
Blaise Lelaulu  
[blaise@fischbachlandcompany.com](mailto:blaise@fischbachlandcompany.com)

# Hillsborough County Ranch & Retreat, Wimauma, FL



Fischbach Land Company  
917 S. Parsons Avenue  
Brandon, Florida 33511  
**813-540-1000**

[FischbachLandCompany.com/HillsboroughRanch](https://www.fischbachlandcompany.com/HillsboroughRanch)

Reed Fischbach  
[reed@fischbachlandcompany.com](mailto:reed@fischbachlandcompany.com)

Blaise Lelaulu  
[blaise@fischbachlandcompany.com](mailto:blaise@fischbachlandcompany.com)

# Hillsborough County Ranch & Retreat, Wimauma, FL



Fischbach Land Company  
917 S. Parsons Avenue  
Brandon, Florida 33511  
**813-540-1000**

[FischbachLandCompany.com/HillsboroughRanch](https://www.FischbachLandCompany.com/HillsboroughRanch)

Reed Fischbach  
[reed@fischbachlandcompany.com](mailto:reed@fischbachlandcompany.com)  
Blaise Lelaulu  
[blaise@fischbachlandcompany.com](mailto:blaise@fischbachlandcompany.com)

# Hillsborough County Ranch & Retreat, Wimauma, FL

Just an Hour to Tampa International Airport  
and 20 Minutes to the I-75 On Ramp



Fischbach Land Company  
917 S. Parsons Avenue  
Brandon, Florida 33511  
813-540-1000

[FischbachLandCompany.com/HillsboroughRanch](https://www.FischbachLandCompany.com/HillsboroughRanch)

Reed Fischbach  
[reed@fischbachlandcompany.com](mailto:reed@fischbachlandcompany.com)  
Blaise Lelaulu  
[blaise@fischbachlandcompany.com](mailto:blaise@fischbachlandcompany.com)



**Fischbach**  
LAND COMPANY

**Hillsborough County Ranch & Retreat, 487 ± acres, Wimauma, FL**



**Fischbach Land Company**  
917 S. Parsons Avenue  
Brandon, Florida 33511  
813-540-1000

[FischbachLandCompany.com/HillsboroughRanch](https://www.FischbachLandCompany.com/HillsboroughRanch)

**Reed Fischbach**  
[reed@fischbachlandcompany.com](mailto:reed@fischbachlandcompany.com)  
**Blaise Lelaulu**  
[blaise@fischbachlandcompany.com](mailto:blaise@fischbachlandcompany.com)