



**Fischbach**  
LAND COMPANY

**PEACEFUL FORT  
MEADE RETREAT**

**61.61± ACRES**



# Property Overview

Nestled in the heart of the Central Florida Ridge, this stunning 61.61-acre property offers the perfect blend of serene pastureland, wooded charm, and functional amenities. Whether you're a farmer, rancher, nature lover, or someone seeking a peaceful retreat, this land offers boundless opportunities. Expansive lush fields ideal for grazing, farming, or recreational use. The terrain provides excellent opportunities for livestock, crops, or equestrian pursuits. The soil on this property is well-suited for a variety of agricultural uses, from pasture to row crops or citrus groves, offering great potential for development. A peaceful oak hammock graces the center of the property, creating a tranquil, shaded haven with mature oak trees. The cool canopy offers a serene escape and rich wildlife habitat, perfect for nature walks, birdwatching and hunting. A well-maintained barn is ready for storage of equipment and supplies. An impressive grove of bamboo adds a unique opportunity for income when the crop is ready for harvest in a couple of years. Easily accessible via well-maintained roads, with proximity to local amenities and major highways, this property strikes the perfect balance between seclusion and convenience. This diverse and picturesque property is a rare find—offering a unique combination of productive land, natural beauty, and outdoor recreation. Whether you're looking to create a farm, a private retreat, or an investment opportunity, this 61-acre property is beautiful as is, and packs plenty of potential.



[www.FischbachLandCompany.com/PeacefulFortMeadeRetreat](http://www.FischbachLandCompany.com/PeacefulFortMeadeRetreat)

## Property Highlights



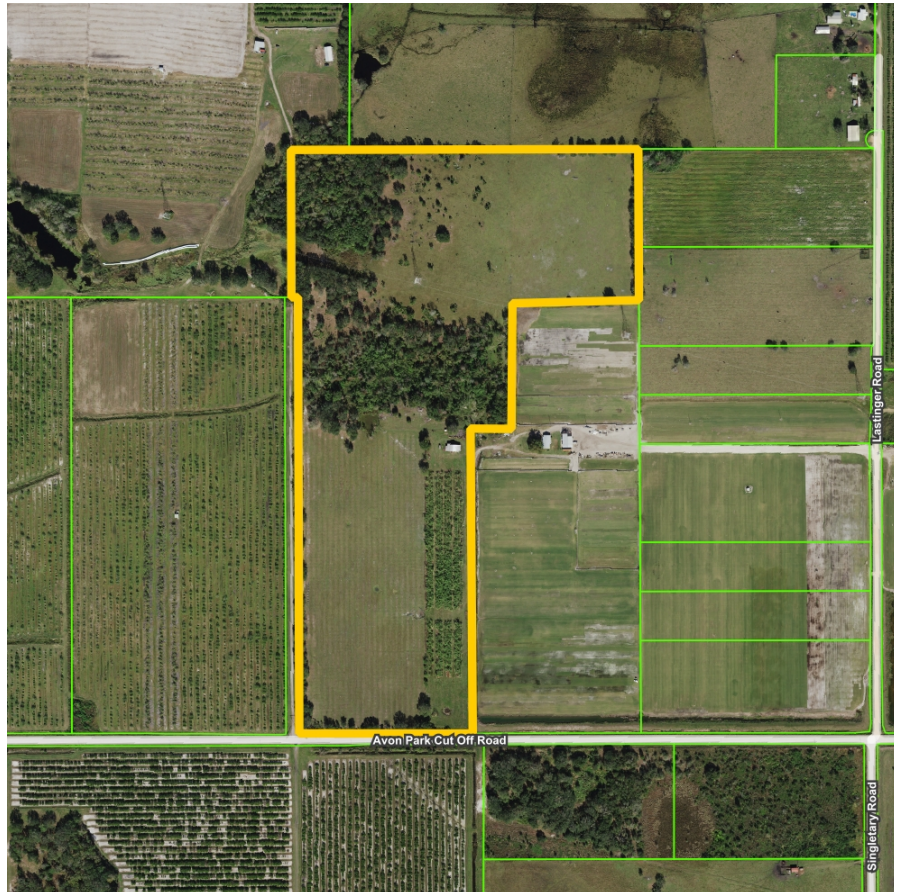
Perimeter and  
Cross-Fenced



50± Acres of High  
and Dry Land



Beautiful Landscape  
Full of Potential



<b>Property Address</b>	0 Avon Park Cutoff Road Fort Meade, FL 33841	<b>County</b>	Polk
<b>Property Type</b>	Agricultural Land/Farms	<b>Folio/Parcel ID</b>	26-32-13-000000-021010
<b>Size</b>	61.61± Acres	<b>STR</b>	13-32-26
<b>Zoning</b>	A/RR	<b>Road Frontage</b>	785 feet on Avon Park Cutoff Road
<b>Future Land Use</b>	A/RR	<b>Property Taxes</b>	\$550.00 (2023)
<b>Price</b>	\$915,000	<b>Site Improvements</b>	Storage Barn, Fencing, Well



# Photos










# Photos








 0 Avon Park Cutoff Rd  
[Click here for directions](#)



# **Fischbach** **LAND COMPANY**

FISCHBACH LAND COMPANY

917 S PARSONS AVENUE, BRANDON, FL 33511

PHONE: 813-540-1000



**ELLIE DAHL** | Agent  
ellie@fischbachlandcompany.com