



**Fischbach**  
LAND COMPANY

**SOUTH  
LITHIA  
HOMESITES**

**10.10± ACRES**

# Property Overview

TWO ADJOINING ACREAGE HOMESITES IN LITHIA! The homesites offer the perfect high and dry, blank canvas for your rural homestead! With 5 acres in the country, you'll have room for animals, a garden and plenty of room for a spectacular outside living space! Both lots have large, statement oaks on the property and wide-open, thriving pastures. Enjoy the breathtaking sunrises and sunsets with the uninhibited views that come with country-living! Less than 15 minutes to Fishhawk, you'll be conveniently located to schools, shopping and dining! Perfect for the equestrian enthusiasts - less than a quarter mile from the Alafia River Corridor Horse Trail with over 8 miles of trails on 4,700 acres!



[www.FischbachLandCompany.com/SouthLithiaHomesites](http://www.FischbachLandCompany.com/SouthLithiaHomesites)

## Property Highlights



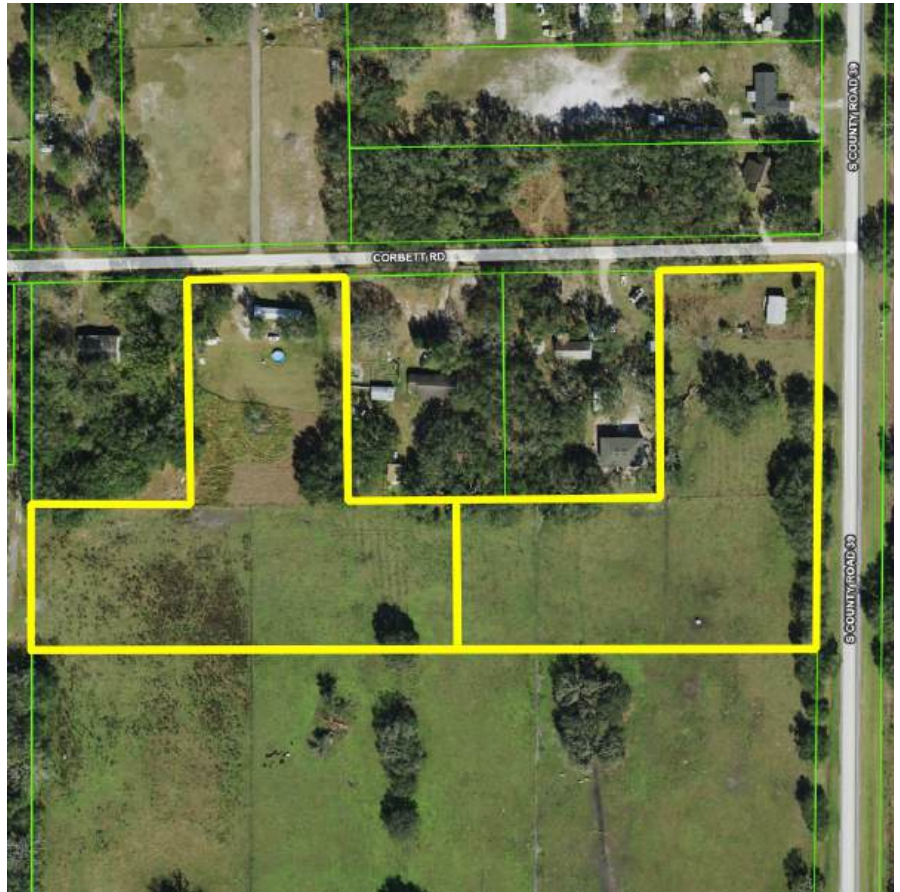
High and Dry



Private and Secluded  
Homesites



Close to State Parks



<b>Property Address</b>	11991 S County Road 39, Lithia, FL 33547	<b>Future Land Use</b>	AR
<b>Property Type</b>	Acreage Homesites	<b>Price</b>	\$700,000
<b>Size</b>	5.05± - 10.10± Acres	<b>County</b>	Hillsborough
<b>Zoning</b>	AR	<b>STR</b>	31-30-22

# West Lot



## WEST LOT

Acreage: 5.05± Acres

Price: \$350,000

# East Lot



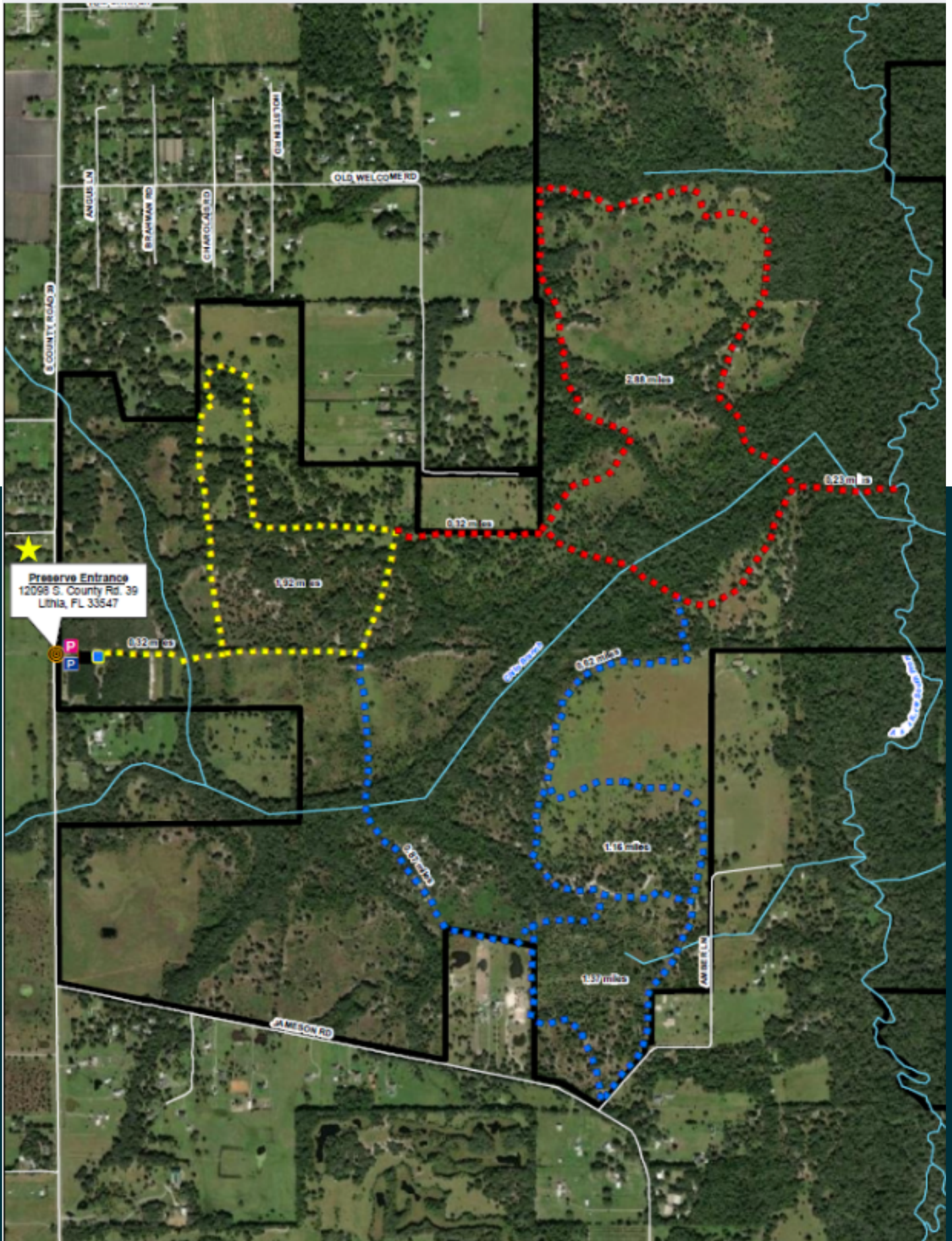
## **EAST LOT**

Acres: 5.05± Acres

Price: \$350,000



# Alafia River Corridor South Trail Map

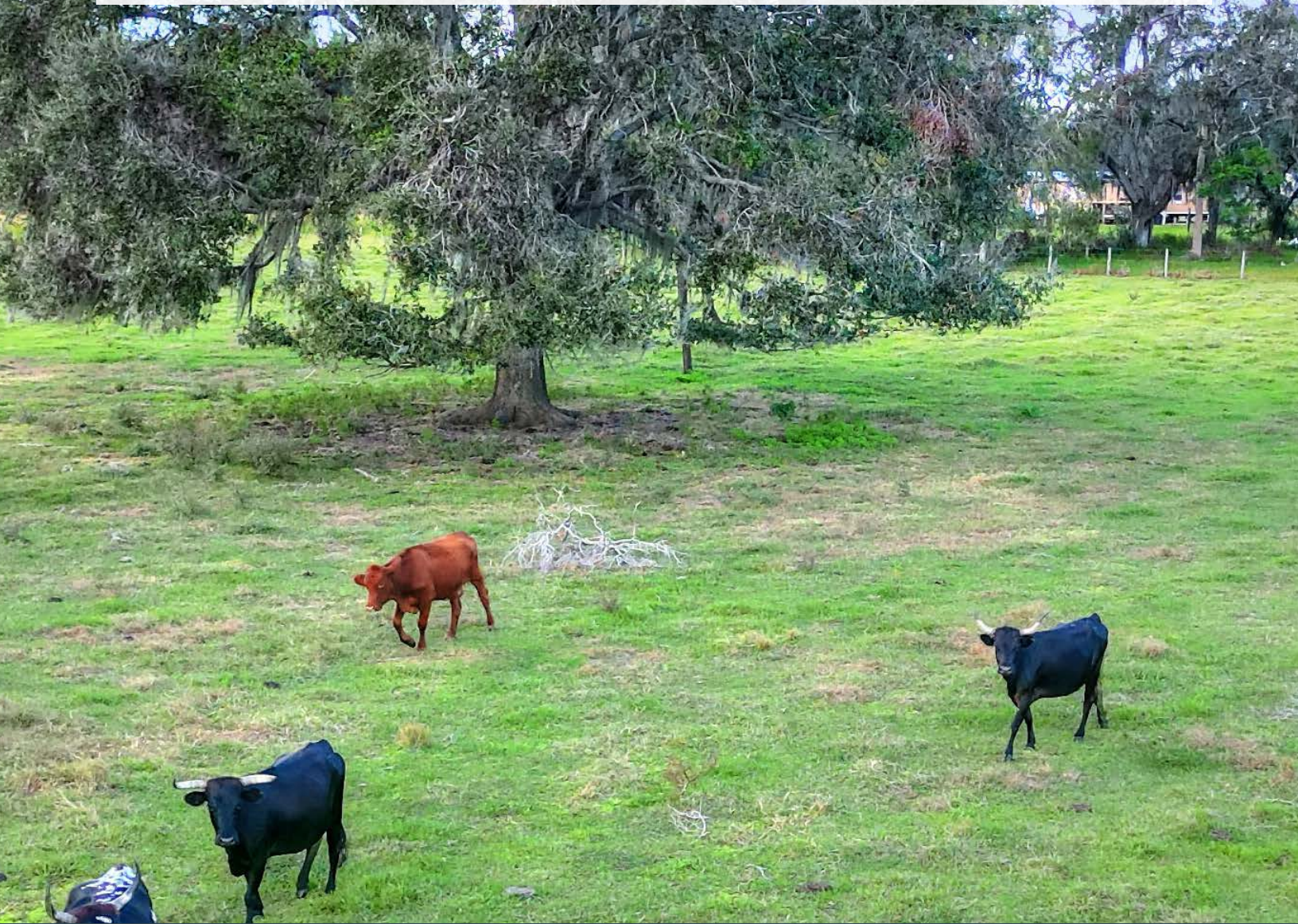


# **Fischbach** **LAND COMPANY**

FISCHBACH LAND COMPANY

917 S PARSONS AVENUE, BRANDON, FL 33511

PHONE: 813-540-1000



**REED FISCHBACH** | Broker  
reed@fischbachlandcompany.com



**MELISSA RABURN** | Agent  
melissa@fischbachlandcompany.com