



# Elegant Old Florida Estate

9824 Brantley Road, Lithia

**Fischbach**  
LAND COMPANY

*Lifestyle & Luxury*





Welcome to this stunning single-story estate, ideally nestled on 6.93 acres of peaceful, tree-lined land, offering privacy, space, and timeless Florida charm.

The striking exterior, with arched windows, a grand columned entry, and natural surroundings, sets the tone for the comfort and elegance within. Step inside to a bright, open-concept layout with tile flooring throughout, creating a seamless flow from room to room. The formal living room welcomes you with abundant natural light, vaulted ceilings, and a gas fireplace, perfect for cozy evenings. The heart of the home is a gourmet kitchen, featuring premium appliances including a Viking oven and Sub-Zero refrigerator, complemented by generous cabinetry and countertop space—ideal for both everyday cooking and entertaining. Retreat to the luxurious primary suite, which includes a double-sided gas fireplace that connects to a spa-inspired bathroom, creating a peaceful, retreat-like atmosphere. Across the home, you'll find three additional bedrooms and two full bathrooms, offering ideal separation for family or guests. A dedicated study and formal dining room provide functional, flexible living spaces for working from home and entertaining with ease. Step outside to enjoy the outdoor kitchen area, perfect for weekend grilling, al fresco dining, and hosting gatherings in your private, scenic backyard.

Acreage: 6.93± Acres  
Pricing: \$1,100,000  
Improvements: 3,004 SF 4BR / 3BA Home



 [FischbachLandCompany.com/ElegantOldFloridaEstate](https://FischbachLandCompany.com/ElegantOldFloridaEstate)





## THE HEART OF THE HOME

Vaulted Ceilings  
Gourmet Kitchen with Premium Appliances  
Two Gas Fireplaces



## DESIGNED FOR EVERYDAY LIVING

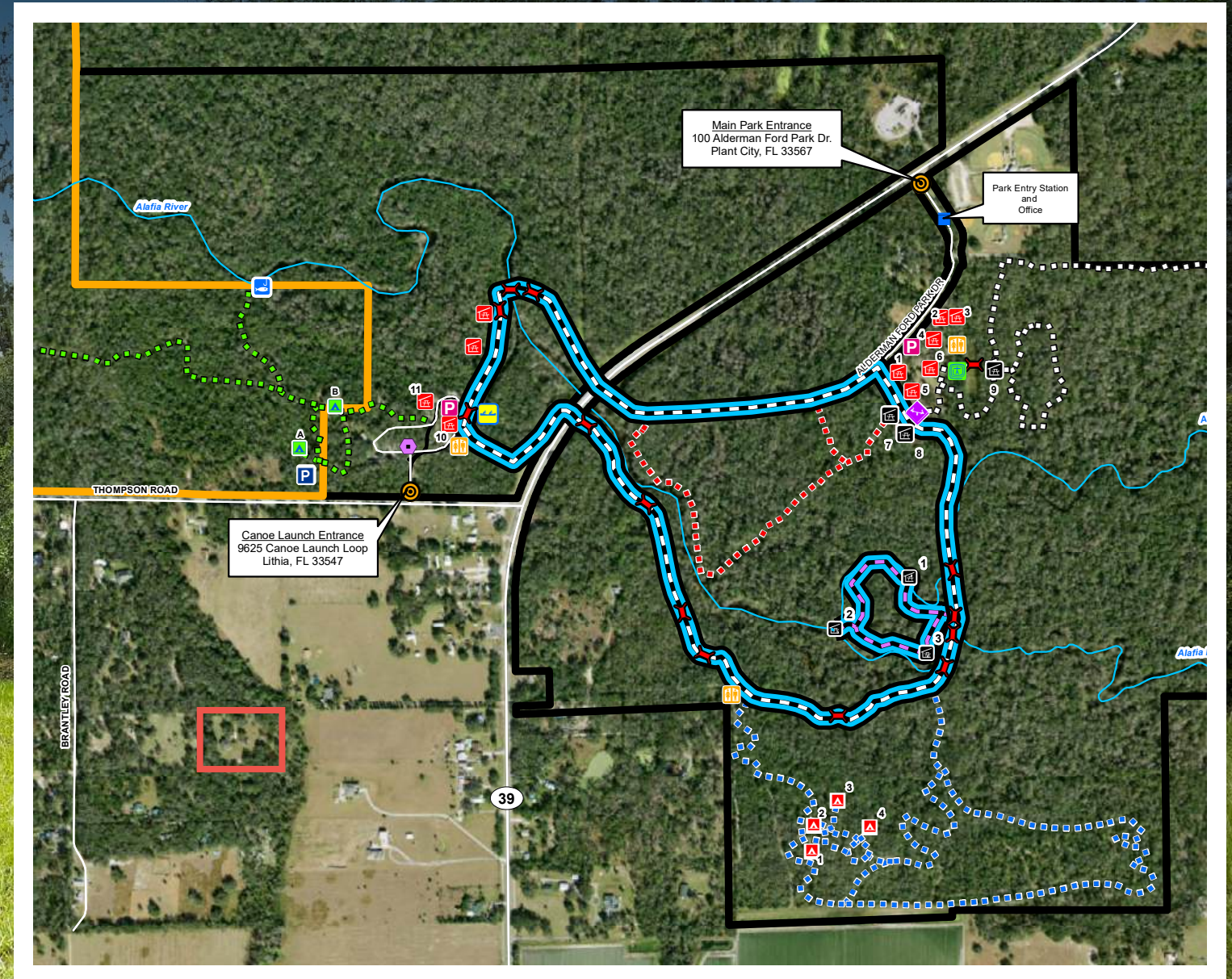
Luxurious Primary Suite  
Double Sided Gas Fireplace  
Open-Concept Layout





The expansive 6.93-acre lot offers ample room for recreation, gardening, livestock, or future additions. With no HOA, you'll enjoy true freedom and flexibility, and the ag-friendly zoning allows for livestock—bringing your country-living dreams to life without sacrificing convenience. Nature lovers will especially appreciate that this property is located less than 2 miles from Alderman Ford Conservation Park, where you can hike, fish, canoe, bird watch, picnic, and even camp. It's the perfect extension of your own outdoor paradise, just minutes away. Located in a highly desirable area, the home is zoned for top-rated middle and high schools, making it an ideal fit for families seeking excellent education in a tranquil, upscale setting. With two gas fireplaces, tile flooring throughout, high-end kitchen finishes, a dedicated study, formal dining room, outdoor kitchen, and access to nearby nature preserves, this home offers a rare opportunity to own a luxurious yet practical estate on nearly 7 acres in a prime Florida location.

## WALKING DISTANCE TO ALDERMAN FORD PARK





# **Fischbach** LAND COMPANY

*Lifestyle & Luxury*

REPRESENTED EXCLUSIVELY BY:



**Reed Fischbach**

Broker

[reed@fischbachlandcompany.com](mailto:reed@fischbachlandcompany.com)



**Ellie Dahl**

Agent

[ellie@fischbachlandcompany.com](mailto:ellie@fischbachlandcompany.com)

917 S PARSONS AVENUE | BRANDON, FL 33511 | 813-540-1000