



Southern Charm Meets Modern
Living on 9± Acres

4486 Miley Road, Plant City

Fischbach
LAND COMPANY

Lifestyle & Luxury



YOUR MODERN FARMHOUSE & HOMESTEAD AWAIT!

Discover the perfect blend of southern charm and modern convenience in this 2022 custom-built home on 9± acres. Thoughtfully designed with character and high-end finishes throughout, this residence offers both comfort and functionality.

At the heart of the home, a **large kitchen island, statement lighting**, and a **spacious, inviting living room** create the perfect gathering space. The open-concept design ensures everyone feels connected, whether you're hosting friends or enjoying quiet family time.

The split floor plan provides privacy, with a stunning primary suite on one side and two generously sized bedrooms and a beautifully appointed shared bath on the other.

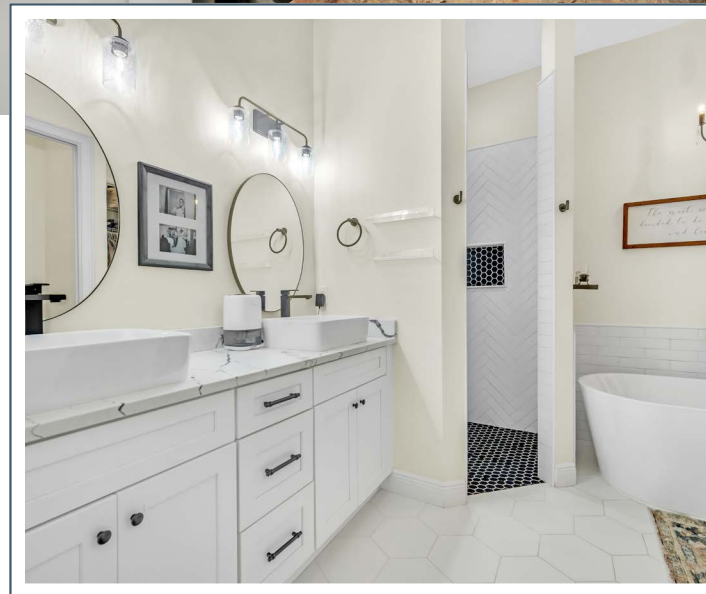
- Acreage: 9.85± Acres
- Pricing: \$1,000,000
- Improvements: 1,705 SF 3BR/2BA Home
25' x 32' metal building





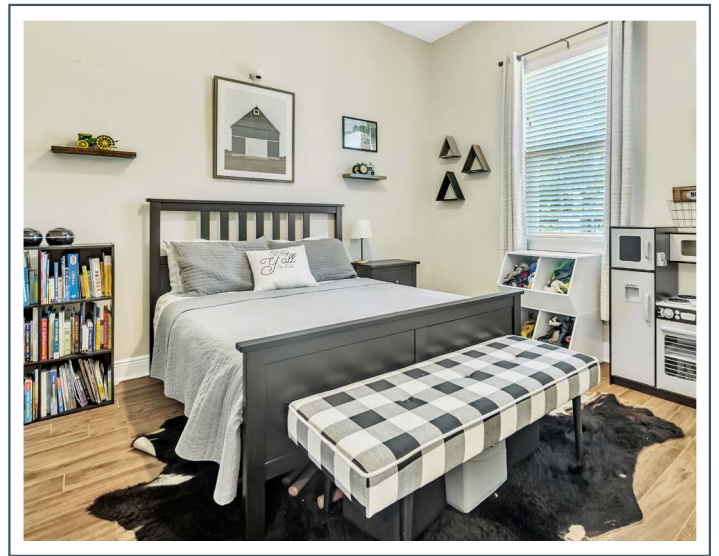
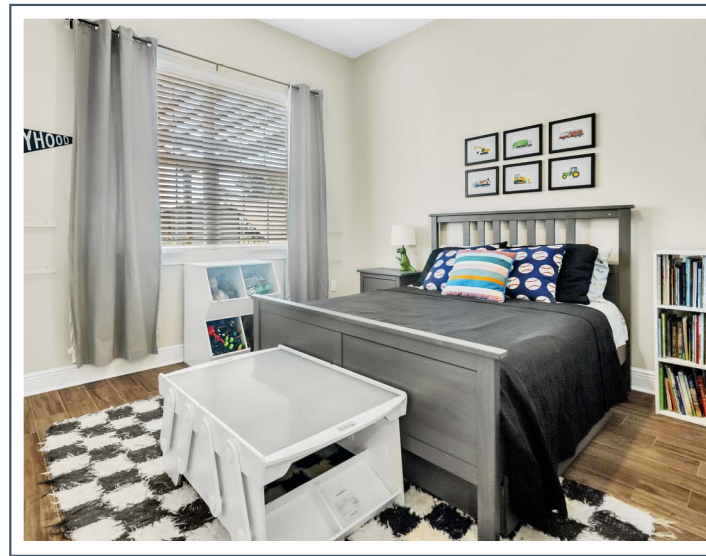
THE HEART OF THE HOME

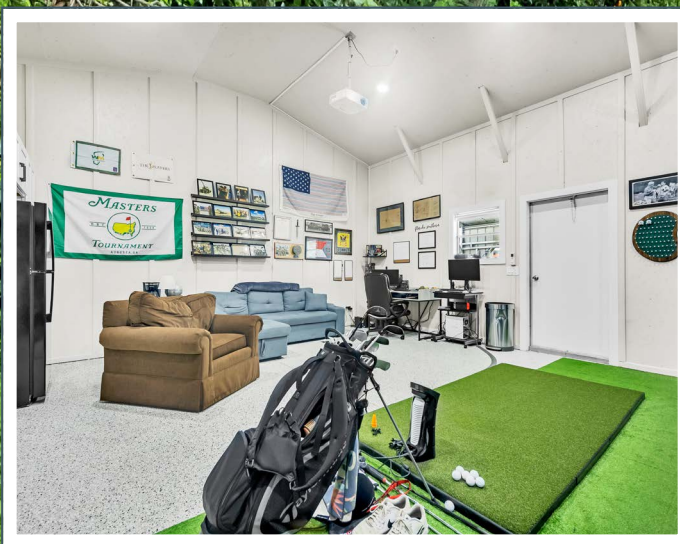
Large Kitchen Island
Statement Lighting
Open-Concept Design



DESIGNED FOR EVERYDAY LIVING

Split Floor Plan
Large Bedrooms
Charming and Functional





Step outside to your dream backyard retreat—featuring a covered porch, expansive deck, pergola, and a built-in stock-tank pool.

For your homesteading lifestyle, the property is fully equipped with a chicken coop, garden, air-conditioned doghouse, and fenced pasture. A 25' x 32' metal building with 500 sq. ft. of air-conditioned space offers endless possibilities—home office, man cave, or entertainment room.

Nestled on a quiet country road in North Plant City, you'll enjoy peaceful surroundings with quick access to I-4—just minutes away from everything you need.

Fischbach LAND COMPANY

Lifestyle & Luxury



REPRESENTED EXCLUSIVELY BY:



Reed Fischbach
Broker

reed@fischbachlandcompany.com



Melissa Hinton
Agent

melissa@fischbachlandcompany.com

917 S PARSONS AVENUE | BRANDON, FL 33511 | 813-540-1000