

Fischbach
LAND COMPANY



**WILD HAIR
RANCH**

39± ACRES

Property Overview

Nestled in the scenic rolling hills of Brooksville, this exceptional 39± acre offering presents a rare opportunity to own a truly unique piece of Florida land. Offered as two separate 19.5± acre parcels, the property features an impressive 60 feet of elevation change, creating beautiful rolling hills rarely found in Florida. The land offers the perfect blend of open pasture and wooded areas, making it ideal for a private estate, equestrian property, recreational retreat, or future family compound.

Enjoy the peaceful rural setting while remaining just 5 minutes from I-75, providing convenient access to Tampa and surrounding areas. The property is also near many of the region's most popular outdoor attractions, including Weeki Wachee Springs State Park, Withlacoochee State Forest, and the historic charm of downtown Brooksville.

Whether you are searching for a private homesite, weekend getaway, or long-term land investment, this property offers a rare combination of elevation, privacy, and accessibility in one of Central Florida's most beautiful areas.



www.FischbachLandCompany.com/WildHairRanch

Property Highlights



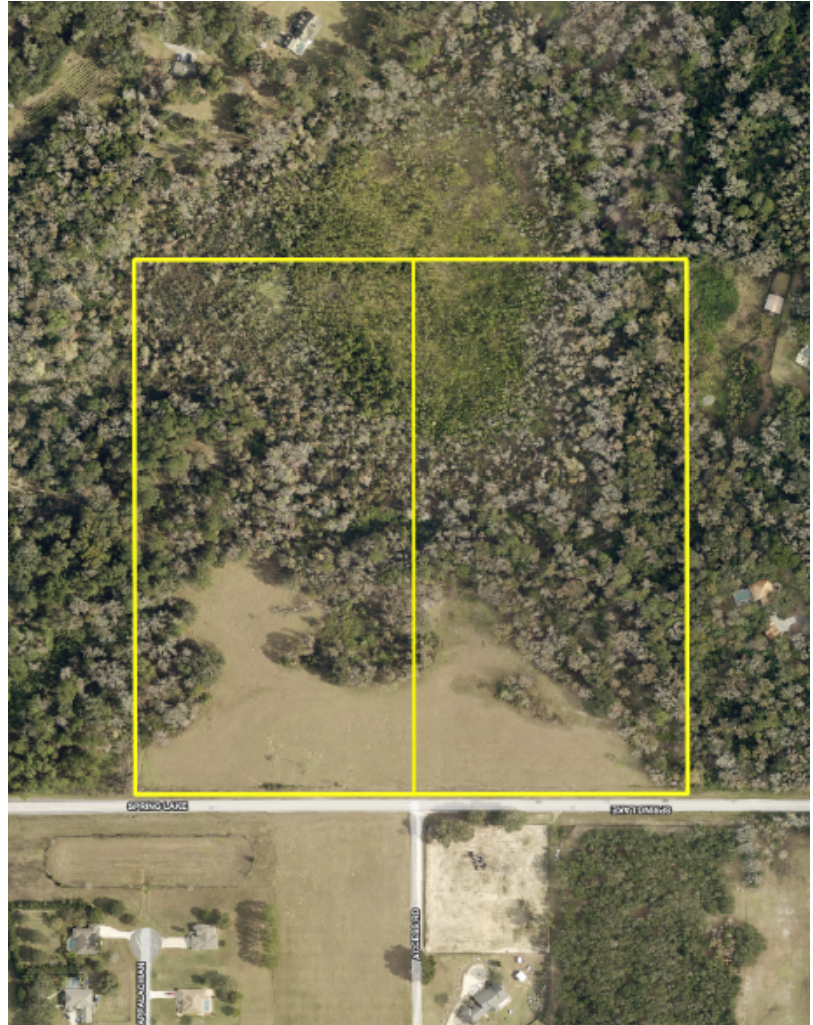
Rare Rolling Hills with 60 ft of Elevation Change



Beautiful Mix of Open Pasture & Mature Woods



Rural Setting & 5 Minutes from I-75



Price	\$790,000 \$395,000 for 19.5± Acres	County	Hernando
Property Address	Spring Lake Highway, Brooksville, FL 34602	Altkey	00389822
Property Type	Acreage Homesite	STR	15-23-20
Size	19.5± - 39± Acres	Utilities	Well and Septic Required
Zoning	AG	Road Frontage	1,325 ft on Spring Lake Highway
Future Land Use	Rural	Property Taxes	\$85.58 (2025)

Photos

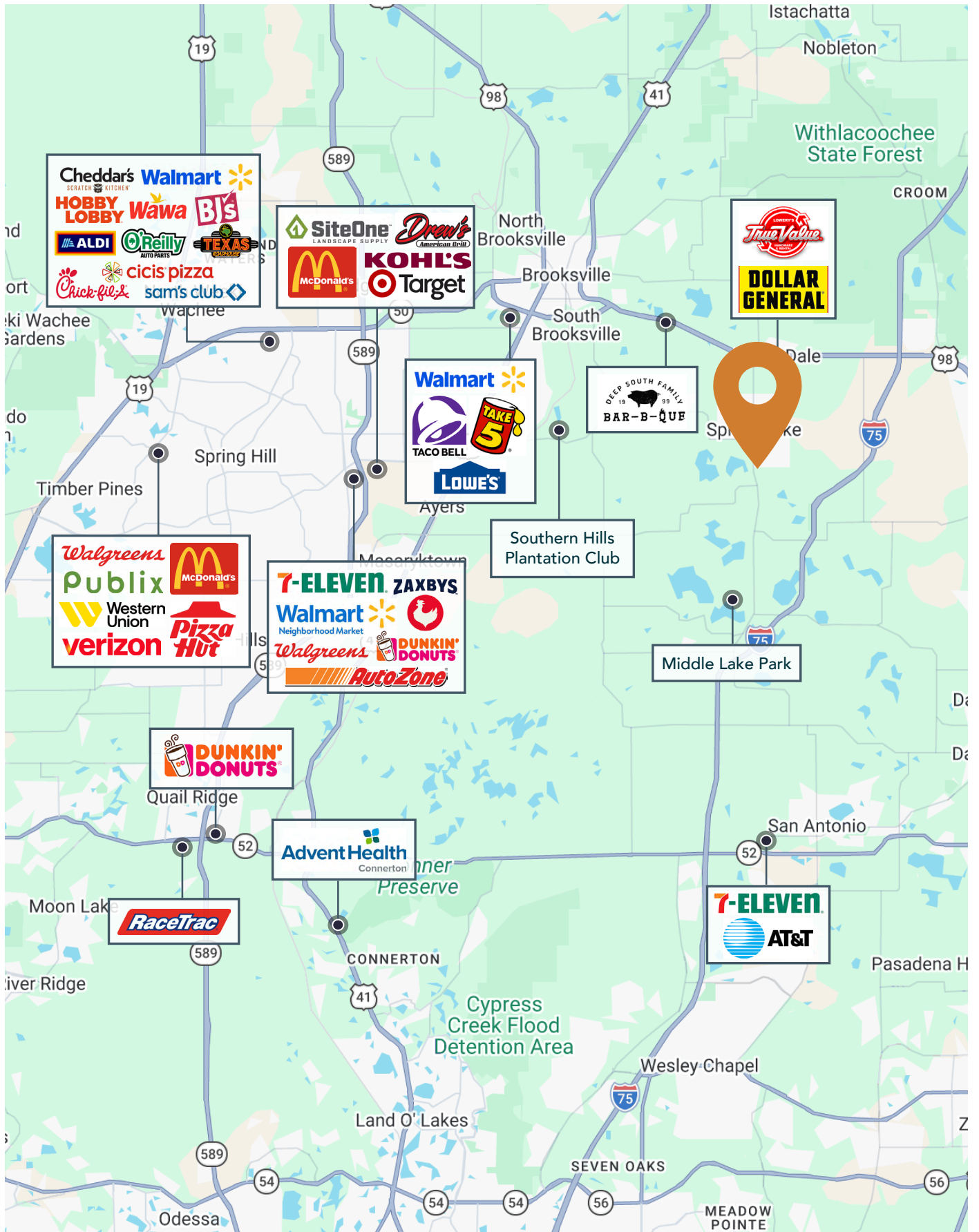




Photos



Map



Fischbach **LAND COMPANY**

FISCHBACH LAND COMPANY

917 S PARSONS AVENUE, BRANDON, FL 33511

PHONE: 813-540-1000



REED FISCHBACH | Broker
reed@fischbachlandcompany.com



BLAISE LELAULU, CCIM | Broker Associate
blaise@fischbachlandcompany.com